

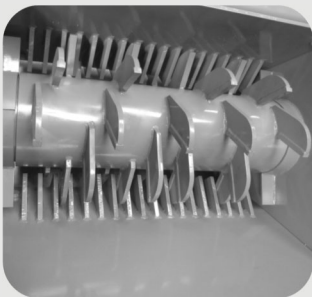
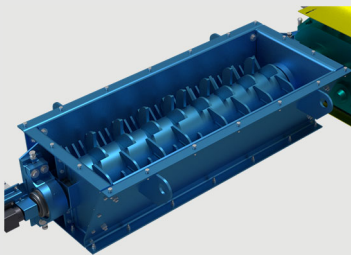


J&H Equipment, Inc.

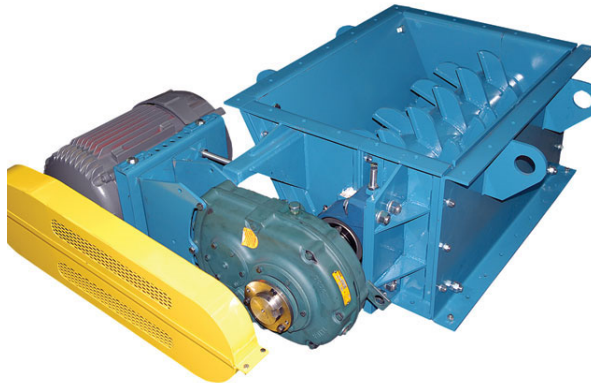
Revolutionizing Pulverizing & Crushing Technologies

FEATURES:

- Single or double rotor
- 10-50hp motor
- Available in sizes from 18" to 60" and up
- 60 Rockwell "C" faced teeth
- AR400 replaceable comb teeth
- Split housing steel frame lined with AR400 plates
- Minimal power requirement thanks to its rotor designed to have only a few teeth engaged at the same time
- Geometry of the comb in relation to the teeth allows for finer material to pour through avoiding any bottlenecking effect
- Zero Speed Switch



J&H Lump Breaker



The J&H Lump Breaker is a compact machine designed with short, hardened tool steel teeth mounted on a rotating drum passing through an AR comb system. The rotor is driven by a shaft mount speed reducer in conjunction with Mill & Chem motors ranging in power from 10 to 50hp, depending on breaker capacity.

The J&H Lump Breaker's purpose is to break lumps up to 400 mm in diameter down to 25 mm or less in order to prepare material for conveying or screening while using a minimal amount of power. Its capacity can go up to 800 tph or 1500 tph for dual rotor units.

The J&H Lump Breaker is designed as an added module to the feed point of a conveyor, elevator, a dryer discharge point, or other types of mills. Built with a unique rotor design allowing only a few teeth to be engaged at the same time, this allows for minimal power requirements. Easily maintained thanks to its split design, all components are accessible without disassembly with neighboring equipment. A self-energized speed switch is coupled with the shaft to cut off the motor if the rotor is blocked or at reduced motion.

The J&H Lump Breaker is designed to yield maximum capacity with minimum power.



- Rotor equipped with hardened 60-Rockwell "C" "faced teeth
- Breaker combs AR400 replaceable comb teeth

J&H Equipment Inc. • 140 Sunshine Way • Alpharetta, GA 30005 •

(770) 992-1606 • Fax (770) 992-1983

Web Site: www.jhequipment.com