



# J&H Equipment, Inc.

## Your Solution for Conveying Material Feeders

### **J&H CONVEYING MATERIAL FEEDER**

#### **FEATURES:**

- Feeder capacity ranges from 10 to 250 mtph
- Available in multiple sizes to meet your needs
- Adjustable, stainless steel material deflectors are available for flow adjustments
- Dual J&H eccentric drive motors
- Access doors throughout feeder for convenient maintenance



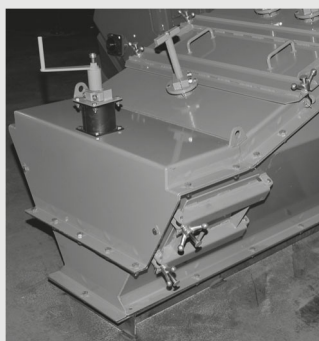
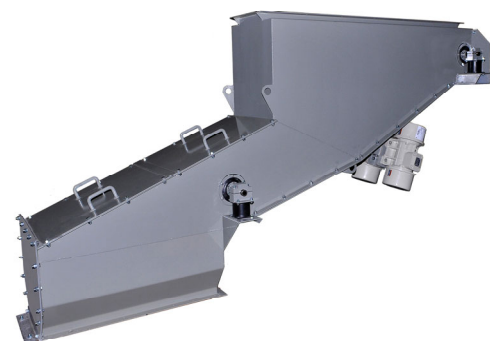
- Designed to convey material while minimizing vibration transmission, static body, vibrating/conveying pan
- Also available in vibrating body design, vibration is isolated via springs or buffers
- Designed for long life and ease of maintenance
- Versatile and customizable to your needs
- Manufactured utilizing state of the art robotic welders and laser cutting equipment

The J&H Conveying Feeder is designed in one of two ways. As a totally enclosed machine with a static housing and an internal stainless vibrating pan or as a vibrating body with vibration isolation spring buffers.

It is designed to convey material with minimal energy requirements. The design and vibration isolation technology used guarantee negligible load stresses at high amplitude conveying rates. The J&H Feeder offers adjustable deflectors to divert material flow and comes standard with access doors for ease of inspection and maintenance.

The J&H Feeder is instrumental in maximizing distribution of material.

*The J&H Conveying Feeder is a proven solution to your material distribution needs.*



J&H Equipment Inc. • 140 Sunshine Way • Alpharetta, GA 30005 •

(770) 992-1606 • Fax (770) 992-1983

Web Site: [www.jhequipment.com](http://www.jhequipment.com)