



## *J&H Equipment, Inc.* *Material Distribution Made Easy*

### ***J&H Multiport Rotary Valve***

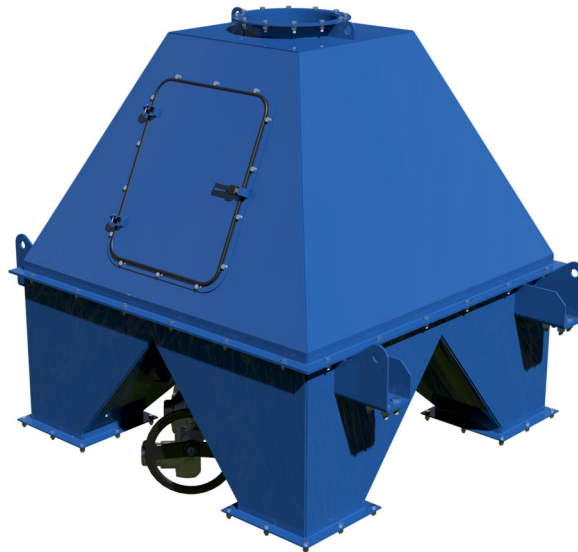
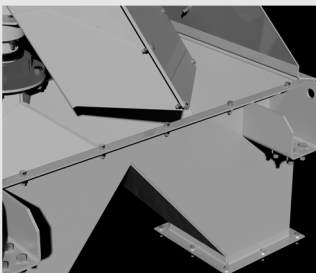
#### **FEATURES:**

##### **Multiport Actuator**

- Programmable positions
- Electronic positioning
- Position and fault indicating feedback signals to Control Room
- Locally controlled maintenance positions

##### **Common Features**

- 4 to 6 discharge ports
- Carbon steel powder coated body, stainless option available
- Large access doors on each side
- Capacity ranges from 50 to 800 tons per hour
- Local control or DCS integration options
- Outlet chutes designed to prevent leakage/buildup in body

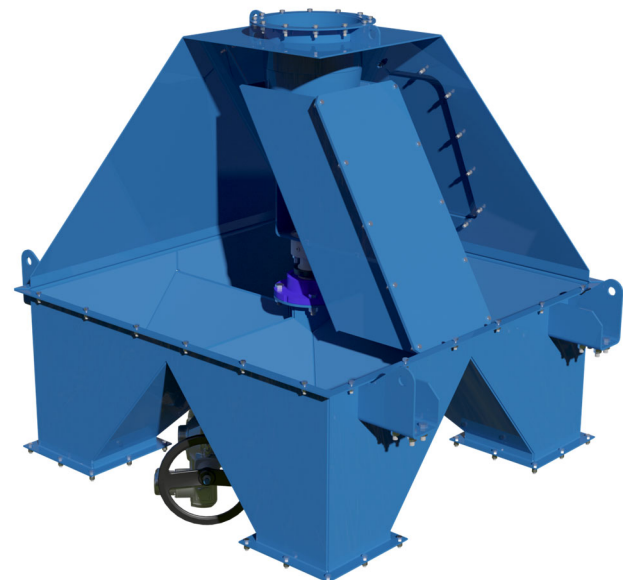


J&H Multiport Rotary valves use a rotary mounted internal chute to direct material from one feed chute into four, five, or six radially directed discharge ports. J&H valves will handle from 50 to 800 tph and up of dry, loose material. An electronically controlled and programmed actuator positions the rotary chute to align with each port according to digital input command signals.

J&H Multiport Rotary valves are designed for ease of operation and reliability. Electronic controller monitors the position and sends out digital and analog signals that can be observed from the control room. The robust design provides reliable service for years with minimum maintenance required.

J&H Multiport Rotary valves are individually designed and engineered to accommodate customer requirements of plant layout, chute size and orientation, and type of product material. Built with a body of carbon steel, the valves are coated with a durable, industrial powder coat. Internal chutes are made of carbon or stainless steel. Feed and discharge port flanges designed to match customer chute work.

All J&H diverters are built with large access doors to allow for easy access to the internal components. An optional local control box can supplement and simplify control at the actuator.



*J&H Equipment Inc. • 140 Sunshine Way • Alpharetta, GA 30005 •*

*(770) 992-1606 • Fax (770) 992-1983*

*Web Site: [www.jhequipment.com](http://www.jhequipment.com)*